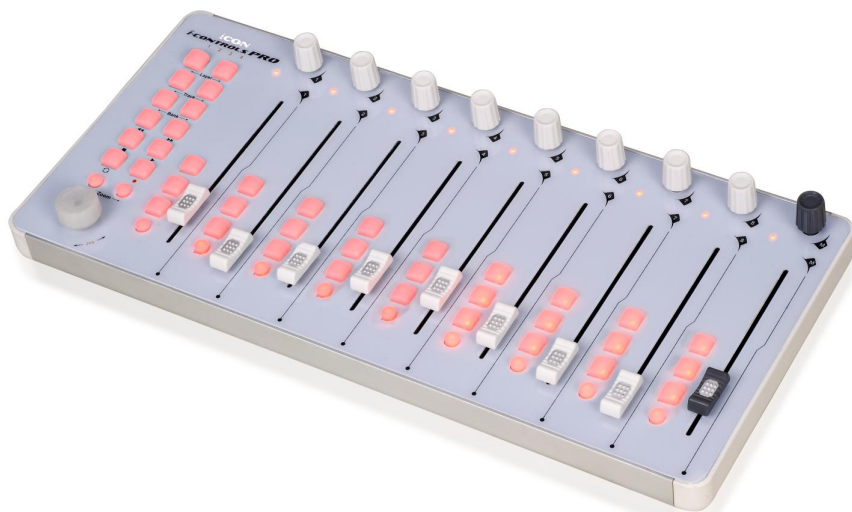


## **CONTROLS PRO**

MIDI/Audio control surface with  
motorized faders



<div style="text-align: center; border: 1px solid black; background-color: black; color: white; padding: 5px; margin-bottom: 10px;"><b>CAUTION</b></div> <div style="display: flex; justify-content: space-around; align-items: center;"> <div style="text-align: center;"> <p><b>RISK OF ELECTRIC SHOCK</b> DO NOT OPEN RISQUE DE CHOC ELECTRIQUE NE PAS OUVRIR</p> </div> </div> <p>CAUTION: TO REDUCE THE RISK OF ELECTRIC SHOCK DO NOT REMOVE COVER (OR BACK) NO USER-SERVICEABLE PARTS INSIDE REFER SERVICING TO QUALIFIED PERSONNEL</p> <p>ATTENTION: POUR EVITER LES RISQUES DE CHOC ELECTRIQUE, NE PAS ENLEVER LE COUVERCLE, AUCUNE ENTRETIEN DE PIECES INTERIEURES PAR L'USAGER, CONFIER L'ENTRETIEN AU PERSONNEL QUALIFIE.</p> <p>AVIS: POUR EVITER LES RISQUES D'INCENDIE OU D'ELECTROCUTION, N'EXPOSEZ PAS CET ARTICLE A LA PLUIE, OU A L'HUMIDITE</p>	<div style="display: flex; justify-content: space-around; align-items: center;"> <div style="text-align: center;"> <p>The lightning flash with arrowhead symbol within an equilateral triangle is intended to alert the user to the presence of uninsulated dangerous voltage within the product's enclosure, that may be of sufficient magnitude to electric shock to persons. Le symbole clair avec point de flèche à l'intérieur d'un triangle équilatéral est utilisé pour alerter l'utilisateur de la présence d'intérieur du coffret de voltage dangereux non isolé d'ampleur suffisante.</p> </div> </div> <p>exclamation point within an equilateral triangle is intended to alert the user of the presence of important operating and maintenance (servicing) instructions in the literature accompanying the appliance. Le point d'exclamation à l'intérieur d'un triangle équilatéral est employé pour alerter les utilisateurs de la présence d'instructions importantes pour le fonctionnement et l'entretien (service) dans le livret d'instruction accompagnant l'appareil.</p>
--	--

## Important Safety Instructions

1. Read this manual thoroughly before using this unit.
2. Keep this manual for future reference.
3. Take notice of and comply with all warnings included in the user's manual or indicated on the appliance.
4. Follow all instructions included in this manual.
5. Do not expose this unit to rain or moisture. Avoid having water or other liquids spilled on this unit.
6. When cleaning the cabinet or other parts of this appliance, use only a dry or slightly damp soft cloth.
7. Do not block any ventilation openings or interfere with the proper ventilation of this unit. Install in accordance with the manufacturer's instructions.
8. Do not use or store near any heat sources such as radiators, heat registers, stoves, or other heat-producing appliances.
9. Do not interfere with the safety purpose of the polarized or grounding-type plug. A polarized plug has two blades with one wider than the other. A grounding-type plug has two blades and a third grounding prong. These are designated for your safety. If the provided plug does not fit into your outlet, consult an electrician.
10. Protect the power cord from being walked on or otherwise damaged by items placed on or against them. Particular attention should be given to the plugs, receptacles, and the point where the cord exits the appliance.
11. To avoid the risk of electrical shock, do not touch any exposed wiring while the unit is in operation.
12. Only use attachments/accessories specified by the manufacturer.
13. Unplug this unit and all connected electrical equipment during lightning storms or when left unused a long period of time.
14. Refer all servicing to qualified service personnel. Servicing is required when the appliance has been damaged in any way or fails to operate normally.

**WARNING: To reduce the risk of fire or electric shock, do not expose this unit to rain or moisture**

# Contents

<b>Introduction .....</b>	<b>1</b>
<b>What's in the package .....</b>	<b>1</b>
<b>Features .....</b>	<b>2</b>
<b>Front Panel Layout .....</b>	<b>3-5</b>
<b>Side Panel Layout .....</b>	<b>5</b>
<b>Getting Started .....</b>	<b>5-6</b>
<b>Connecting your iControls Pro controller system .....</b>	
<b>Installing iMap™ Software for MAC OSX .....</b>	<b>6</b>
<b>Installing iMap™ Software for Windows .....</b>	<b>7-8</b>
<b>Assigning MIDI functions with iMap™ .....</b>	<b>9</b>
<b>iMap™ iControls Pro software panel .....</b>	<b>9-10</b>
<b>Firmware upgrade .....</b>	<b>11</b>
<b>Restore the factory default settings .....</b>	<b>11</b>
<b>Daisy Chain with iControls Pro or any i-Pro series Controllers .....</b>	<b>12</b>
<b>Specifications .....</b>	<b>13</b>
<b>Services .....</b>	<b>14</b>

## Introduction

Thank you for purchasing the ICON iControls Pro Midi/Audio control surface. We sincerely trust this product will provide years of satisfactory service, but if anything is not to your complete satisfaction, we will endeavor to make things right.

In these pages, you'll find a detailed description of the features of the iControls Pro, as well as a guided tour through its front and side panels, step-by-step instructions for its setup and use, and full specifications.

You'll also find a warranty card enclosed - please don't forget to fill it out and mail it so that you can receive online technical support at: [www.icon-global.com](http://www.icon-global.com). And so we can send you updated information about these and other ICON products in the future. As with most electronic devices, we strongly recommend you retain the original packaging. In the unlikely event the product must be returned for servicing, the original packaging (or reasonable equivalent) is required.

With proper care and adequate air circulation, your iControls Pro will operate without any trouble for many years. We recommend that you record your serial number in the space provided below for future reference.

Please write your serial number here for future reference:

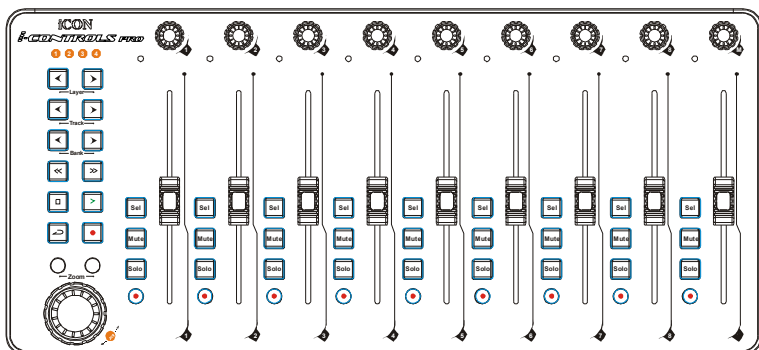
Purchased at:

Date of purchase:

## What's in the package?

- iControls Pro USB-MIDI Controller x 1pc.
- Software CD / User' Manual x 1
- Quick Start Guide x 1
- USB2.0 Cable x 1
- AC adaptor x 1pc

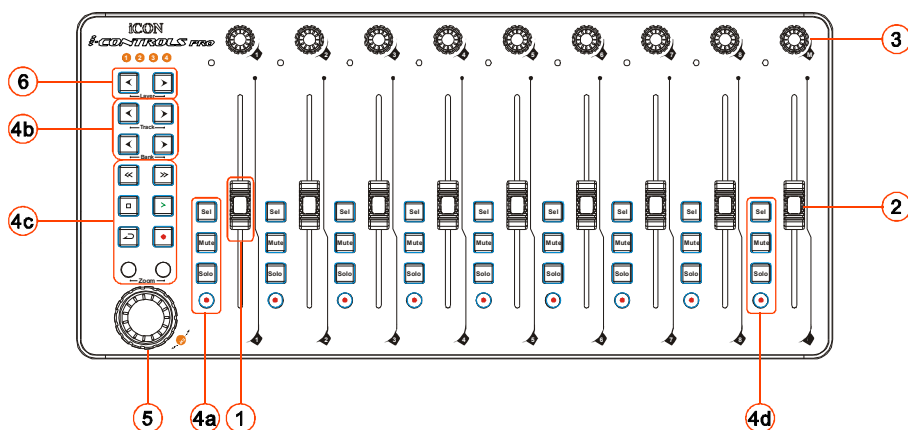
## Features



**CONTROL PRO**

- Extremely compact, designed to match the MacBook Pro™
- 8 touch-sensitive motorized channel faders
- 1 touch-sensitive motorized fader for master channel
- 9 encoder knobs
- Jog wheel shuttle for fast search and control
- Illuminated buttons for each channel including Sel, Mute, Solo and Record
- 6 illuminated transport buttons including Play, Stop, Rec, Rewind, Fast forward and Loop
- Illuminated “Zoom” buttons with 2 direction keys
- 2 illuminated “Track” buttons for easy selection of different channels
- 2 illuminated “Bank” buttons for shifting 8-channels
- 2 illuminated “Layer” buttons for selecting from layers 1 to 4
- 2xUSB Connectors for a daisy chain with the i-Pro series product
- Mackie control build-in for Cubase, Nuendo, Samplitude, Logic Pro and Ableton Live.
- iMap™ software included for easy mapping of MIDI functions
- Class-compliant with Windows XP, Vista (32-bit), Windows 7 (32-bit & 64-bit), and Mac OS X (IntelMac)
- USB 2.0 high speed connectivity
- Robust aluminum and metal casing with Kensington lock port
- An aluminium cover in different graphic designs and colours is available as an optional extra
- 9V/3A power adapter included

# Front Panel Layout



Functions described below for the different controls are based on the Mackie Control mode that are set on layer 1 of the iControls Pro. You may set your own midi functions for each control at the "User defined" mode for 2-4 layers with the iMap software provided.

## ① Channel faders

The eight 100mm motorized faders are generally used for controlling the track volume of your DAW. Depending on your DAW, you may use the "Flip" button to switch the function of these faders to change other settings. They are all touch sensitive to allow override automation the moment you touch a fader. Also, they are motorized; they will automatically move to reflect the current level of the selected channels in your DAW application. Any automation recorded in a project will be reflected by the fader positions.

## ② Master fader

This 100mm motorized fader operates the same as the other 8 faders. It controls your DAW software's master channel fader.

## ③ Knobs

The nine rotary encoder knobs are generally used for controlling the track pan position, aux send levels and EQ of your DAW. You may also preset them to adjust specific parameters within plug-ins and virtual instruments.

## ④ Control buttons

### 4a) Recording channel control buttons section

**REC buttons** -Activate and deactivate the recording state of the associated channel. The switch will light red when the channel is armed.

**SOLO buttons** -Turn On and Off the solo state of the associated channel. The switch will light green when the channel solo state is on and other channels will be muted. You could solo multiple channel by pressing SOLO buttons on additional channels.

**MUTE buttons** - Activate and deactivate the mute state of the associated channel. The switch will light blue when the channel is muted. Mute the channel.

**SEL buttons** -The SEL buttons activate the associated channels in the DAW software in order to perform a specific operation (for example, when adjusting EQ with the ASSIGNABLE ENCODERS, the SEL switch will be used to choose the channel you want to adjust). When a channel is selected, the associated SEL switch's red LED will light up

### 4b) Motorized fader control buttons section

**Track < button** - Shift “one” channel up for all faders (except the master channel).

**Track > button** - Shift “one” channel down for all faders (except the master channel).

**BANK < button**-Shift “eight” channels up for all faders (except the master channel).

**BANK > button** -Shift “eight” channels down for all faders (except the master channel).

### 4c) Transport and Zoom control buttons section

**PLAY button** -Activate the play function of the DAW.

**STOP button** -Activate the stop function of the DAW.

**REC button** -Activate the record function of the DAW.

**REWIND button** -Activate the rewind function of the DAW.

**FAST FORWARD button** - Activate the fast forward function of the DAW.

**LOOP button** -Activate the loop function of the DAW.

**Zoom < button** -The LEFT button is used to navigate (left movement) through the Graphical User Interface (GUI) of the DAW application.

**Zoom > button** -The RIGHT button is used to navigate (right movement) through the Graphical User Interface (GUI) of the DAW application.

### 4d) MIXER button - Press this button to launch the mixer window of theDAW.

**READ button** -Press the READ button to activate the read function of the current audio track.

**WRITE button** - Press the WRITE button to activate the write function of the current audio track.

**LOCK button** - Activate to lock all motorized faders.

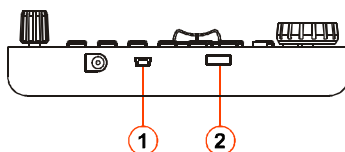
## ⑤ Jog wheel

The jog wheel is used for various purposes specific to the DAW application, including shuttle and scrubbing functions.

## ⑥ Layer Buttons

These two buttons allow you to switch between the four layers. Each layer can be set to different parameters for the faders, knobs and buttons etc.

## Side Panel Layout



### ① USB port (B-Type)

Functions as a MIDI port to your notebook (or computer) and compatible software. Also provides power to your iControls Pro.

### ② USB port

Use to daisy chain with the second unit of iControls Pro or any i-Pro series controllers such as iDJ pro.

## Getting Started

### Connecting your iControls Pro controller system

#### ① Connect the iControls Pro to your Mac/PC via the USB port.

Choose a USB port on your Mac/PC and insert the wide (flat) end of the USB cable. Connect the cable's small jack end to the iControls Pro. Your Mac/PC should automatically “see” the new hardware and notify you that it is ready to use.

**Note:** Make sure you have connected the 9V power supply adapter (provided) to your iControls Pro as the USB-bus itself is not able to supply sufficient power to the iControls Pro.

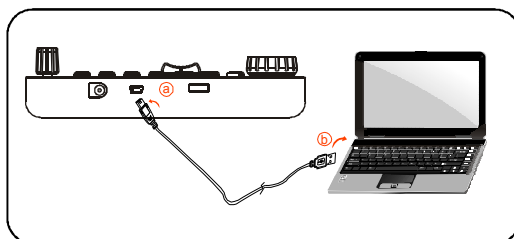


Diagram 1



Diagram 2



## ② Set the iControls Pro's Mackie Control mode for your DAW and make your own midi mapping for layers 2-4

Launch the iMap software and select the Mackie Control mode according to your DAW or Traktor for "MIDI Learn" at the "Control Mode" pull down menu on layer 1. Then set your preferred midi function for each controller for layers 2-4. Press the "MIDI Devices" button to select the iControls Pro as the MIDI input and output device. Press the "Send Data" button to upload the settings.

**Note:** If iControls Pro does not appear on the pull-down menu, select "USB Audio" as the MIDI In and Out device.

## ③ DAW setup

**Dependent on what mode you have set your iControls Pro with iMap, please set your DAW as followings:**

**User Define mode:** Select iControls Pro as your MIDI In and Out device at your DAW.

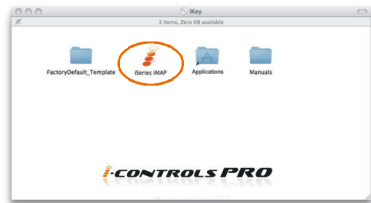
**Mackie Control mode:** Add "Mackie Control" device and select iControls Pro at the MIDI In & Out sections.

**Traktor mode:** Use MIDI Learn function to set your controls.

## Installing iMap™ Software for MAC OSX

Please follow the procedures below step-by-step to install your iMap™ software to Mac OS X

- ① Insert the Utility CD in your CD-Rom and double click "i-Pro Series iMap" icon.



- ② iMap "Device select" window pop-up, click the device button accordingly to launch the iMap™ software.

**Tips:** By "drag and drop" the "i-Pro iMap" icon into the "Applications" folder, you could create a "iMap" shortcut on your Mac's desktop.

# Installing iMap™ Software for Windows

Please follow the procedures below step-by-step to install your iMap™ software.

- ① **Turn on your PC.**
- ② **Insert the Utility CD in your CD-Rom**

After you have inserted the CD into your CD-Rom, an installation screen should appear as shown in diagram 1; click "iMap™ installation".

*(Note: If the installation screen not appear automatically go to the CD folder and double click on "Setup")*



Diagram 1

- ③ **Setup Wizard appear**  
Setup wizard appears, please click "Next"



Diagram 2

- ④ **Choose Install Location**  
Choose your preferred install location for iMap™ or use the default location and click "Next"



Diagram 3

- ⑤ **Select shortcut**  
Select the start menu folder in which you would like to create the iMap™ shortcut. Then click "Next"

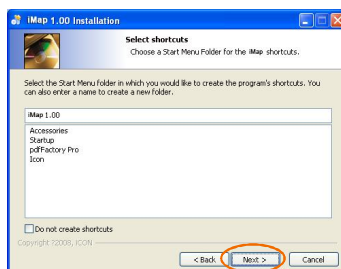


Diagram 4

## 6 Create a shortcut on your desktop

Please untick the box if you do not want to place a shortcut icon on your desktop for iMap™, otherwise click "Next"

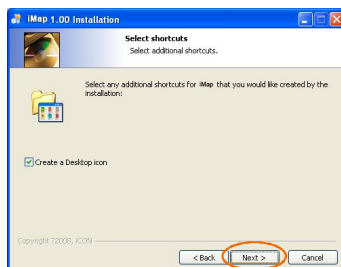


Diagram 5

## 7 iMap™ started to install

The iMap™ installation has now started, wait for it to finish. Then click "Finish"



Diagram 6

## 8 Installation finished

Click "Finish" to complete the iMap™ software installation.

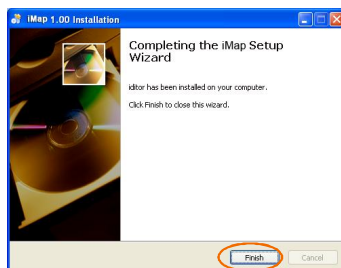
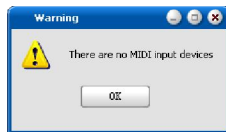


Diagram 7

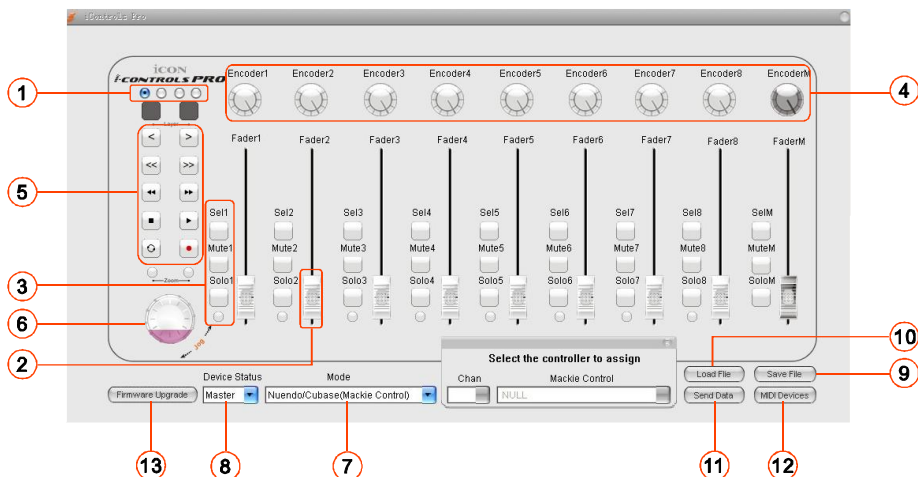
# Assigning MIDI functions with iMap™

You can use iMap™ to assign the MIDI functions of your iControls Pro easily.

**Note:** If your iControls Pro is not connected to your Mac/PC, a message of "There are no MIDI input devices" will appear. Please connect iControls Pro to your Mac/PC with the provided USB cable.



## iMap™ iControls Pro software panel



### ① 4 Layer buttons

You may have 4 different "Layers" settings for different applications. Each "Layer" can have its own control settings.

**Layer 1:** Select the available DAW's Mackie Control mode for Mackie control protocol or Traktor mode for "MIDI Learn" function from the "Mode" pull down menu.

**Layers 2-4:** User Define mode allows you to set your own midi function for each control.

### ② Assign MIDI functions to the fader (User define mode only)

Select your desired MIDI functions for the fader.

### ③ Assign MIDI functions to the control buttons (User define mode only)

Select your desired MIDI functions for the control button.

④ **Assign MIDI functions to the knobs (User define mode only)**

Select your desired MIDI functions for the knob.

⑤ **Assign MIDI functions to the buttons (User define mode only)**

Select your desired MIDI functions for the buttons.

⑥ **Assign MIDI functions to the Jog wheel (User define mode only)**

Select your desired MIDI functions for the jog wheel

⑦ **Mode selector (Layer 1 only)**

Select the Mackie Control mode according to your DAW or Traktor mode for “MIDI Learn” at the pull-down menu for layer 1. It will switch to “User define” mode automatically if you switch to layers 2, 3 & 4.

*Tips: A Mackie Hui mode will be added soon, please check our official website for updates.*

⑧ **Status Selector**

Select “Master” if you are using iControls Pro as a standalone device or select “Slave” if it is cascading with an i-Pro series controller.

⑨ **“Save file” button**

Click this button to save your current settings for the iControls Pro. The file is an “.iControlsPro” file.

⑩ **“Load file” button**

Click this button to load a previously saved “.iControlsPro” setting file for your iControls Pro.

⑪ **“Send Data” button**

Click this button to upload the iMap™ software settings to your iControls Pro via USB connection.

*(Note: You must have connected your iControls Pro to your Mac/PC, otherwise the settings upload will not be successful.)*

⑫ **“MIDI Devices” button**

Click this button, a MIDI device select window will appear as shown in diagram 1. Please select “ICON iControls Pro” for the MIDI Out Devices.



Diagram 1

⑬ **“Firmware Upgrade” button**

Click this button to enter into the firmware upgrade window for iControls Pro. Please refer to P.11 for the firmware upgrade procedure.

## Firmware upgrade

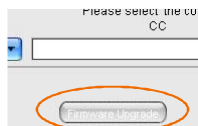


Diagram 1



Diagram 2

**Step 1:** Connect the ICON product using a USB connection. Press the “MIDI Device” button at the top to select your connected ICON product as the “MIDI In and Out” device at the pull-down menu.

**Note:** If your connected ICON product model name does not appear on the pull-down menu, select “USB Audio” as the MIDI In and Out device.

**Step 2:** Click the “Update” button.

**Step 3:** Press the “MIDI Device” button at the top to select your connected ICON product as the “MIDI In and Out” device at the pull-down menu.

**Step 4:** Click the “Open File” button to browse the new firmware file.

**Step 5:** Click the “Upload” button to upload the firmware.

**Warning:** The firmware upload process “MUST” be completed and not be interrupted during the file uploading, otherwise the firmware may not be rewritten again.

## Restore the factory default settings

To restore your iControls Pro settings to factory default, simply import the “Factory Default” setting file into your iControls Pro with the original setting of the iMap software.

## Daisy Chain with iControls Pro or any i-Pro series Controllers

You may daisy chain i-Pro series controllers including iControls Pro. Because most of the i-Pro series controllers are USB bus-powered (iControls Pro is powered by an external power adapter) the stability depends on the total power demand of the chain. Please visit our website for recommendations on daisy chain sequences for different i-series controllers.

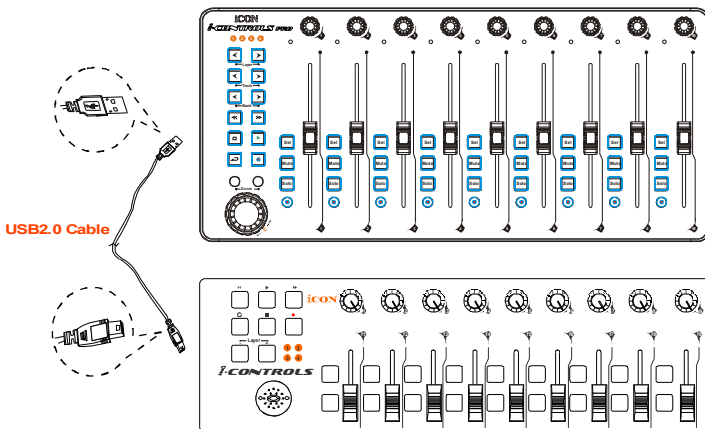
### ① Connect the first of the i-Pro series controllers to your Mac/PC via the USB port

Select a USB port on your Mac/PC and insert the wide (flat) end of the USB cable and the other small end (B-type USB pack) to i-Pro series controller.

### ② Connect the next of the i-Pro series controllers

Insert the wide (flat) end of the USB cable to the first i-Pro series controller's second USB port and the other small end (B-type USB jack) to the second i-Pro series controller's USB port.

**Note:** Due to the limitation of power supply via USB port, your connected devices chain might exceed the power supply limit of the USB port and cause malfunction. For recommendations on the combination and daisy chain sequence of different i-Pro series controllers, please visit the ICON website at the following link: [www.icon-global.com](http://www.icon-global.com)



## Specifications

Connector:	To computer	USB connector (mini B type)
	To i-Pro series controller	USB connector (standard type)
Power supply:		5V/3A DC
Current consumption:		2.0A or less
Weight:		1.80kg (3.96lb)
Dimensions:		392(L) X 180(W) X 26(H)
		15.43"(L) x 7.09"(W) x 1.02"(H)



## Services

**If your iControls Pro needs servicing, follow these instructions.**

1. Ensure the problem is not related to operation error or external system devices.
2. Keep this owner's manual. We don't need it to repair the unit.
3. Pack the unit in its original packaging including end card and box. This is very important. If you have lost the packaging, please make sure you have packed the unit properly. ICON is not responsible for any damage that occurs due to non-factory packing.
4. Ship to the ICON tech support center or the local return authorization.

### **U.S. OFFICE:**

ICON Digital Corporation  
8001 Terrace Ave., Suite 201  
Middleton, WI, 53562  
USA

### **ASIA OFFICE:**

ICON (Asia) Corp.  
Unit 807-810, 8/F., Sunley Centre,  
No. 9 Wing Yin Street, Kwai Chung, NT.,  
Hong Kong.

5. For additional update information please visit our website at:  
**[www.icon-global.com](http://www.icon-global.com)**



**i**CON<sup>®</sup>  
[www.icon-global.com](http://www.icon-global.com)  
[info@icon-global.com](mailto:info@icon-global.com)

